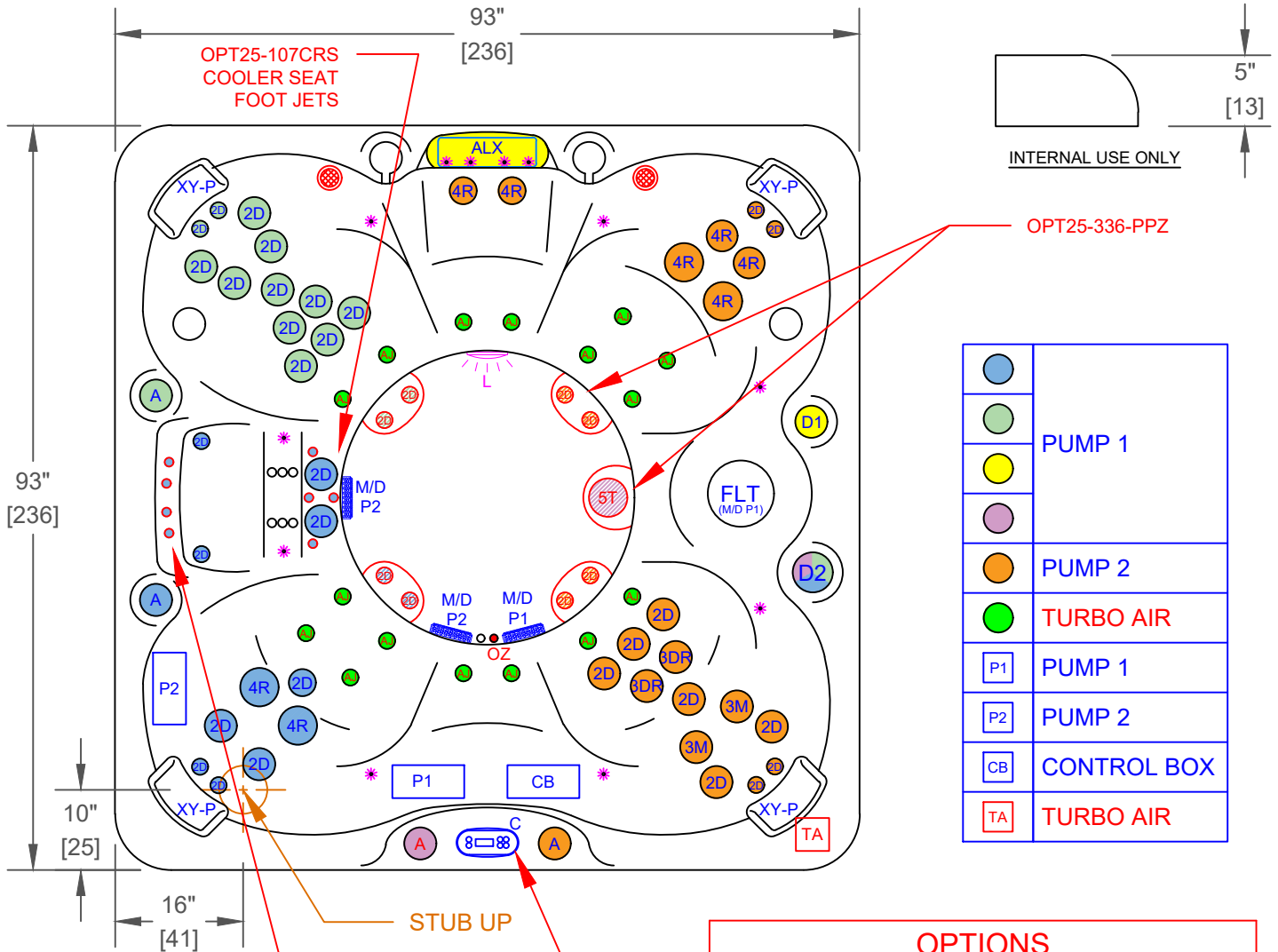


NOTES:
 1. DUE TO OUR CONTINUOUS IMPROVEMENT PROGRAM, ALL MODELS AND SPECIFICATIONS ARE SUBJECT TO CHANGE WITHOUT NOTICE.



REPLACE WITH TP700 WHEN OPT25-107CRS IS ORDERED

	PUMP 1
	PUMP 2
	TURBO AIR
	PUMP 1
	PUMP 2
	CONTROL BOX
	TURBO AIR

SYMB.	DESCRIPTION	PART NUMBER	QTY.
2D	2" CLUSTER STORM DIRECTIONAL VELOCITY	PLUCS2441009S-CDCL	31
4R	4" POLY STORM ROTO VELOCITY	PLUCS2443029SS-CDCL	8
3DR	3" MINI STORM TWISTER VELOCITY	PLUCS2442009SS-CDCL	2
3M	3" MINI STORM MASSAGE DIRECTIONAL VELOCITY	PLUCS2442059S-CDCL	2
A	VELOCITY AIR CONTROL VALVE	PLUCS6603709-CDCL	3
D2	VELOCITY 2" WATER DIVERTER VALVE	PLUCS6053309-CDCL	1
ALX	LED WATERFALL WITH D1 VALVE		1
FLT	50 SQ. FT. BIO-CLEAN FILTER WITH TELEWEIR	PLU510-9559-CDCL	1
M/D	MAIN DRAIN	PLU21400203	3
XY-P	TEXTURED Y-PILLOW (WHITE)		4
C	TP500		1
L	5" MULTI COLORED LED LIGHT		1
*	PERIMETER LED LIGHTING		1
P1	HIGH PERFORMANCE PUMP 6.0 BHP		1
P2	HIGH PERFORMANCE PUMP 4.0 BHP		1
CB	CONTROL BOX WHISPER HOT™ HEATING SYSTEM		1

SYMB.	DESCRIPTION	OPTION NUMBER
-	DOME WITH FOOT JETS & TORNADO	OPT25-336-PPZ
-	DELUXE SHELL COLOR UPGRADE (FROM GLOSS WHITE)	OPT25-211-C
-	1 HP BLOWER WITH 16 AIR JETS (UPGRADES TO BP501X AND TP700 EQUIPMENT)	OPT25-AIR759B
-	COOLER SEAT UPGRADE (INCLUDES BLOWER + 8 AIR JETS)	OPT25-107CRS
	24/7 FILTRATION SYSTEM	OPT25-112C
	CAL SPAS SALT SYSTEM	OPT25-113S
	2.0 FREEDOM SOUND STEREO	OPT25-S22
-	CAL CONNECT RF MODULE	OPT25-168RF
	HYDRO CLEAR OZONATOR	OPT25-102CX-C
-	PURE CURE UV SYSTEM	OPT25-191B
-	ELITE HORIZONTAL CABINET PANELS AND BLACK BEAM CORNERS (COLORS: GRAY, MOCHA, LIME OAK)	OPT25-E981-PPZ

PROPRIETARY AND CONFIDENTIAL THE INFORMATION CONTAINED IN THIS DRAWING IS THE SOLE PROPERTY OF CAL SPAS. ANY REPRODUCTION IN PART OR AS A WHOLE WITHOUT THE WRITTEN PERMISSION OF CAL SPAS IS PROHIBITED.		 CAL SPAS INC. 1462 EAST NINTH STREET, POMONA, CA 91766	
SPECIFICATIONS		TITLE	JET LAYOUT - STD
DIMENSION (in)	93"x93"x37"	LINE	PATIO PLUS
DIMENSION (cm)	236x236x94	MODEL	2023 SPA LINE
DRY WEIGHT	900 LBS [408 Kg]	NUM	PPZ-843BC
FILLED WEIGHT	4650 LBS [2109 Kg]	DWG NO.	CS003466
WATER CAP.	450 GAL [1703 L]	SCALE	NTS
		REV	A
		SHEET 1 OF 1	